



Birmingham International  
Student Homes

# Wesley International House

52 Oakfield Road, Selly Park  
Birmingham, B29 7EQ

+44(0)121 472 0109



## **Accommodation**

---

General Information	4
En Suite Room - Type 1	5
En Suite Room - Type 2	6
Standard Single Room	7
Small Single Room	8
Communal Facilities	8/9

## **What We Offer**

---

Cleaning	10
What we offer	11



## GENERAL INFORMATION

WIH is located at the junction of Oakfield Road and Eastern Road in Selly Park. It is very close to the main campus of the University of Birmingham.

The full postal address is:

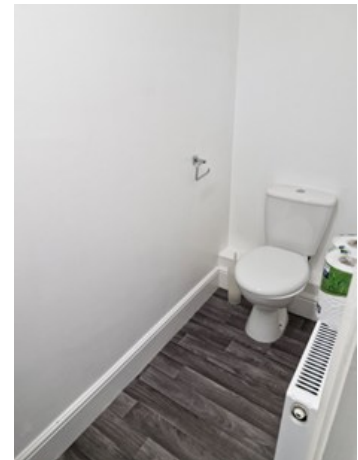
Wesley International House  
52 Oakfield Road  
Selly Park  
B29 7EQ  
Telephone: +44 (0)121 472 0109  
Email: [enquiries@bish.org.uk](mailto:enquiries@bish.org.uk)  
Website: [www.bish.org.uk](http://www.bish.org.uk)

The office is open 8.30am to 4.30pm - Monday to Friday except public holidays.

Wesley International House is in walking distance of the University of Birmingham main campus and has hosted international students for more than 50 years with our aim to provide our international students a home away from home. Excellent for anyone wanting accommodation that is more than just a room but also an opportunity to pursue your studies in a safe, comfortable and inclusive location. Our communal areas are warm and welcoming with a large television lounge, dining room with games and books and a communal kitchen and laundry facilities. Our outside spaces include a tennis court and green landscaped gardens which makes our accommodation stand out when compared to private landlord and university accommodation. We also provide separate accommodation areas for male only and female only occupancy if required.

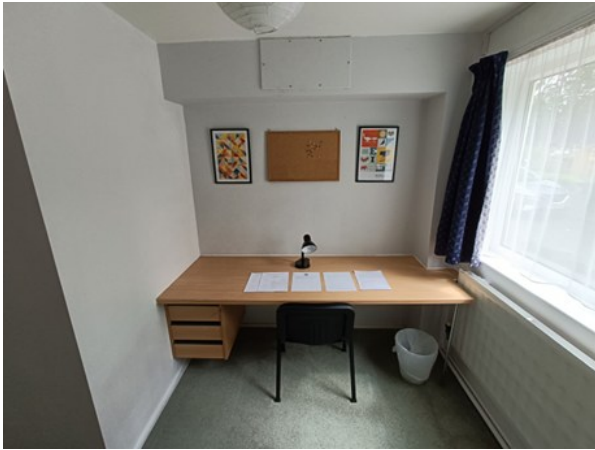
## TYPES OF ROOMS AVAILABLE:

### EN SUITE ROOM - TYPE 1



# Accommodation

## EN SUITE ROOM - TYPE 2



## STANDARD SINGLE-SHARED BATHROOM

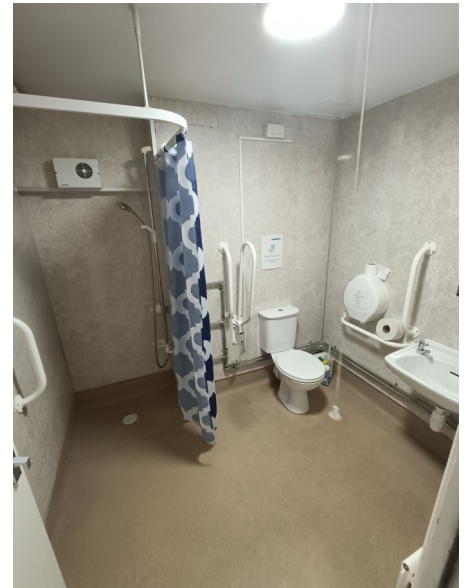


# Accommodation

## SMALL SINGLE-SHARED BATHROOM



## COMMUNAL FACILITIES



# Accommodation



## Cleaning – What We Do

### Shared bathrooms, toilets and main kitchen

Cleaned every weekday (except bank holidays).

### Ensuite bathrooms

Cleaned twice per month when we clean your room.

### Bedrooms

Cleaned twice per month, when we clean your room your bed linen will be changed during this time



## What we provide

Plate, bowl, cup, knife, fork and spoon, cooking pans, space in a fridge and freezer, desk, chair, wardrobe, lamp, bin in each room and bedding (pillow, pillow case, duvet, sheets).

We recommend you bring towels and you must bring a UK compatible adaptor.

## Contents insurance

Student's personal effects are covered by BISH's Insurance. Your items are covered inside your room against fire, flood and theft.

## Internet

All residents have free access to the Glide network which allows fast wireless access. A wired network port may also be provided in your room.



## Laundry

You can operate the washing machines and tumble dryer by card / contactless payment.

## Smoking

All areas of the building are non-smoking areas, which includes the use of e-cigarettes. If you do wish to smoke or vape you must go outside and use the designated areas and use the cigarette bins provided.

## Parking

There is a small car park available. Cars should be parked on the far side of the house near the trees.

## Leaving during the licence period

Four weeks written notice must be given if the Licensee wishes to end the Licence Agreement.

## Payment

We accept payments via bank transfer or by card. We do not accept cash.

# Birmingham International Student Homes

For further information please email [enquiries@bish.org.uk](mailto:enquiries@bish.org.uk)

To make a booking please complete an application form on our website:

[www.bish.org.uk/application](http://www.bish.org.uk/application)

**Wesley International House**  
52 Oakfield Road  
Selly Park  
Birmingham  
B29 7EQ

**Asbury Overseas House**  
3 College Walk  
Selly Oak  
Birmingham  
B29 6LF

[www.bish.org.uk](http://www.bish.org.uk)

